



**State Water Resources Control Board
 Temporary Urgency Change Order (6/17/2022)
 Russian River Hydrologic Report
 November 4, 2022 - November 10, 2022**

Prepared as a requirement of the Order approving Sonoma Water's Petition for Temporary Urgency Change in Permits 12947A, 12949, 12950, and 16596 (Applications 12919A, 15736, 15737, and 19351).

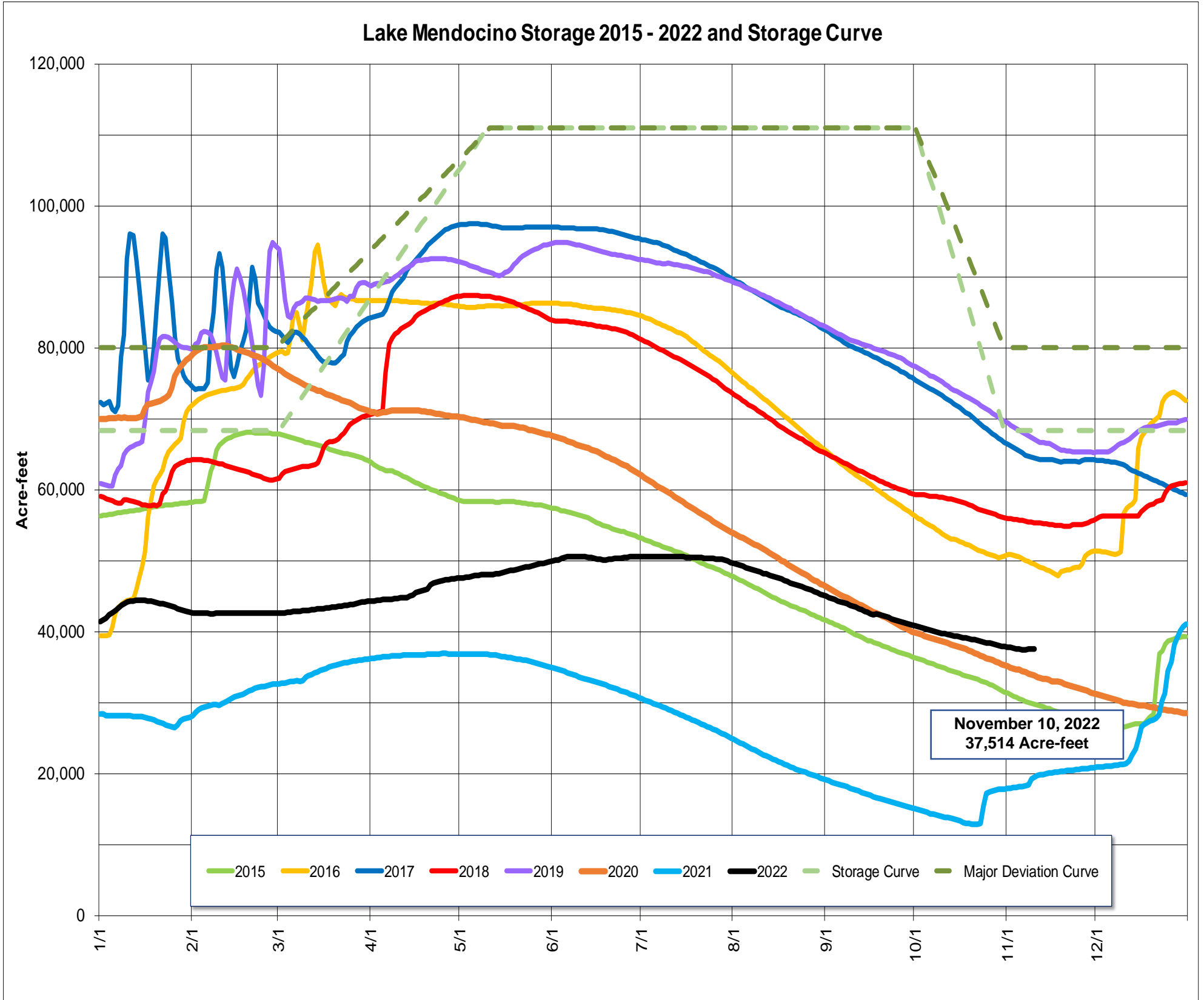
Instream Flow Requirements as of November 10, 2022

Basis	Reach	Instantaneous (cfs)	5-day Average (cfs)
Modified Per Order: Critical Condition	Upper Russian River	15	25
D-1610: Normal Condition	Dry Creek	105	-
Modified Per Order: Critical Condition	Lower Russian River	25	35

Upper and Lower Russian River based on criteria as established in the Order issued 6/17/2022.

Lake Mendocino

Lake Mendocino Storage 2015 - 2022 and Storage Curve

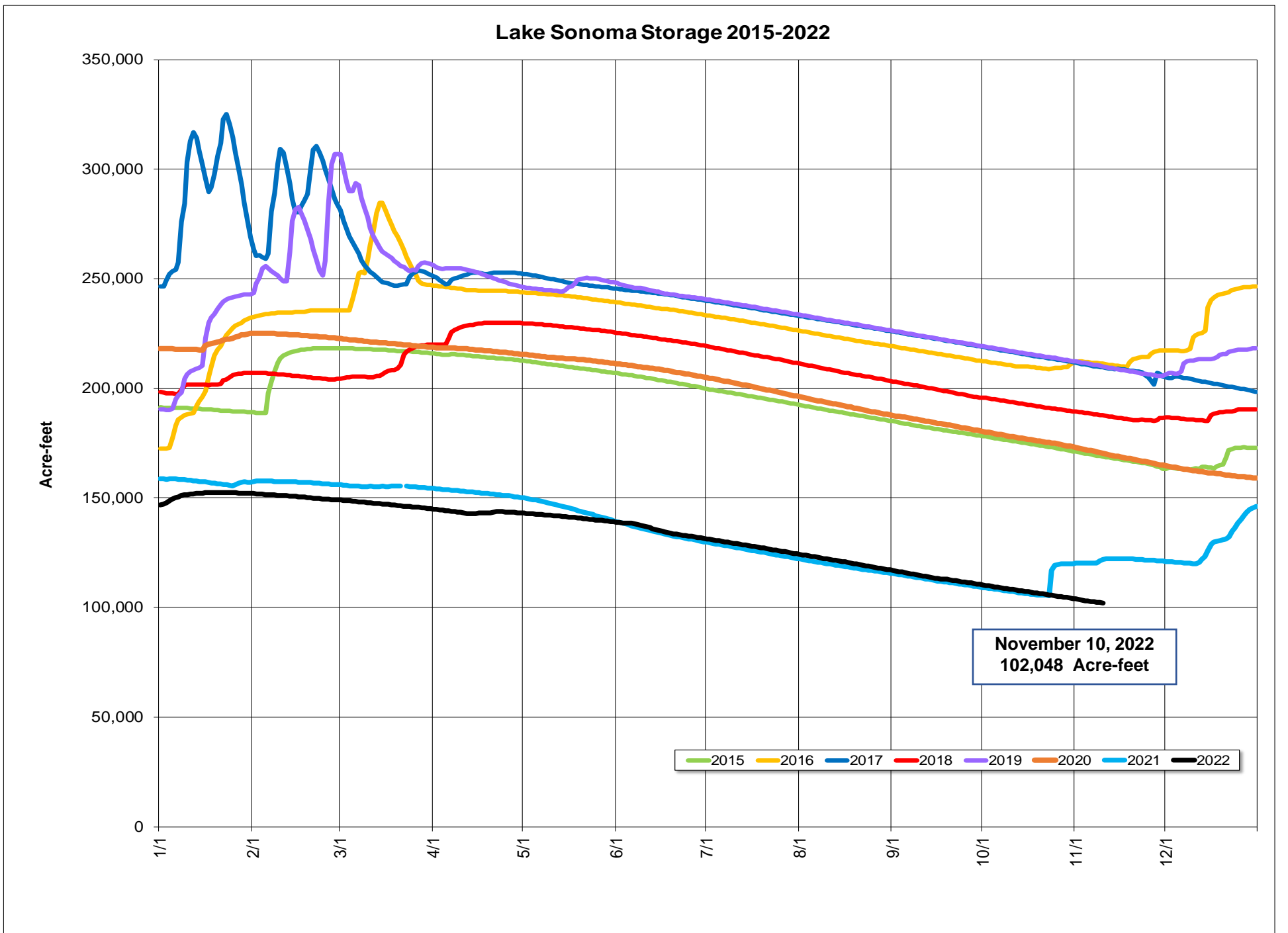


Storage (acre-feet)	November 10, 2022	37,514	
		Total	Average Daily Rate
Change in Storage (acre-feet)	Last 30 days	-2,182	-73
	Last 7 days	-158	-23
Daily Inflow (cfs)	Last 7 days	Min	7
		Max	76
		Mean	36
Release (cfs)	Last 7 days	Min	33
		Max	51
		Mean	45

Lake Sonoma



Nathan Baskett, March 3, 2011



Storage (acre-feet)	November 10, 2022	102,048	
Change in Storage (acre-feet)	Last 30 days	-5,454	-182
	Last 7 days	-1,086	-155
Daily Inflow (cfs)	Last 7 days	Min	0
		Max	74
		Mean	19
Release (cfs)	Last 7 days	Min	103
		Max	111
		Mean	109

Potter Valley Project

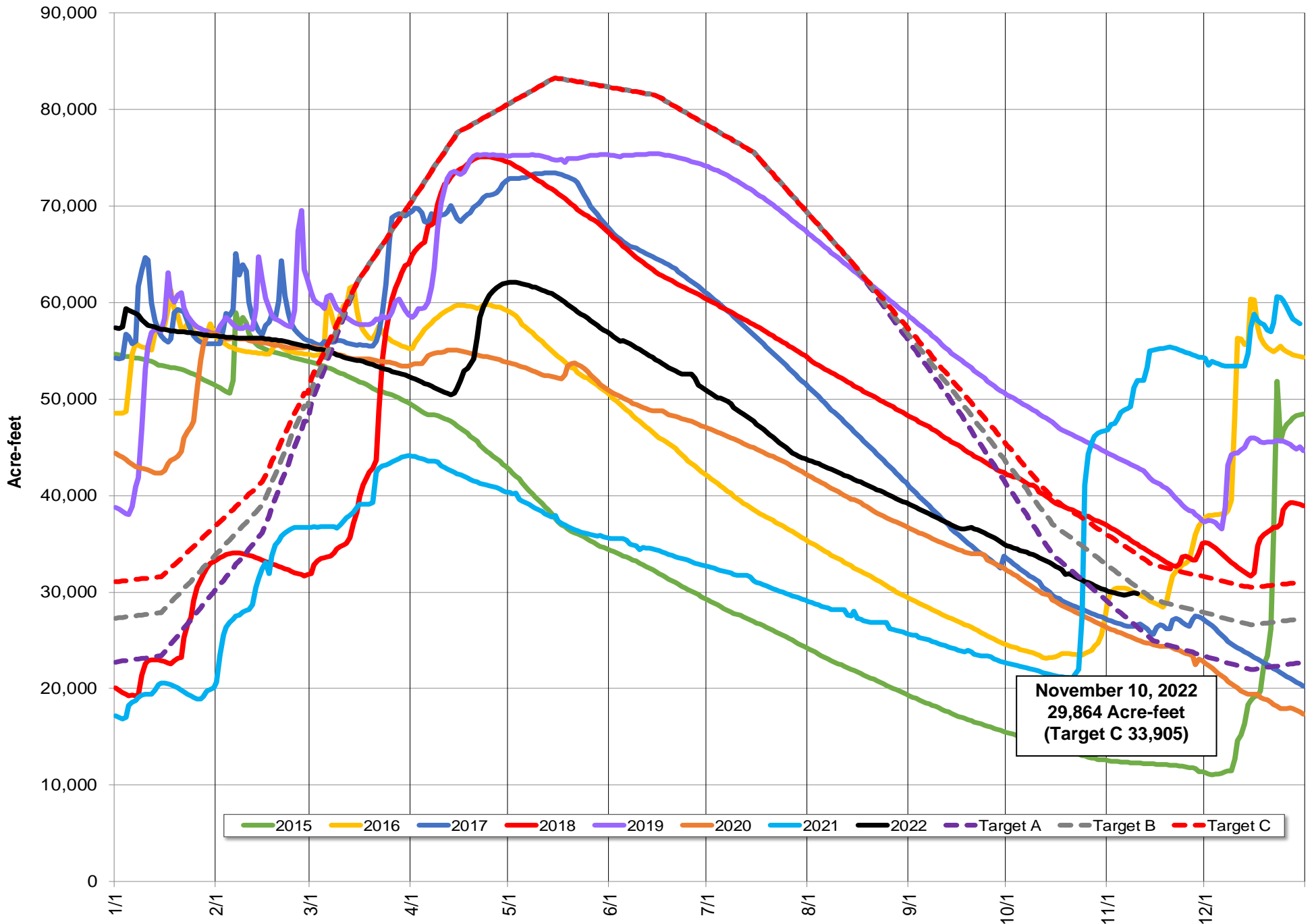
PVP Diversion (cfs)	November 10, 2022	12
---------------------	-------------------	----

Lake Pillsbury

Parameter	Date Range	Cumulative	Daily Average
Inflow* (acre-feet)	October 1, 2022 - November 10, 2022	2,420	59
	Last 7 days	214	31

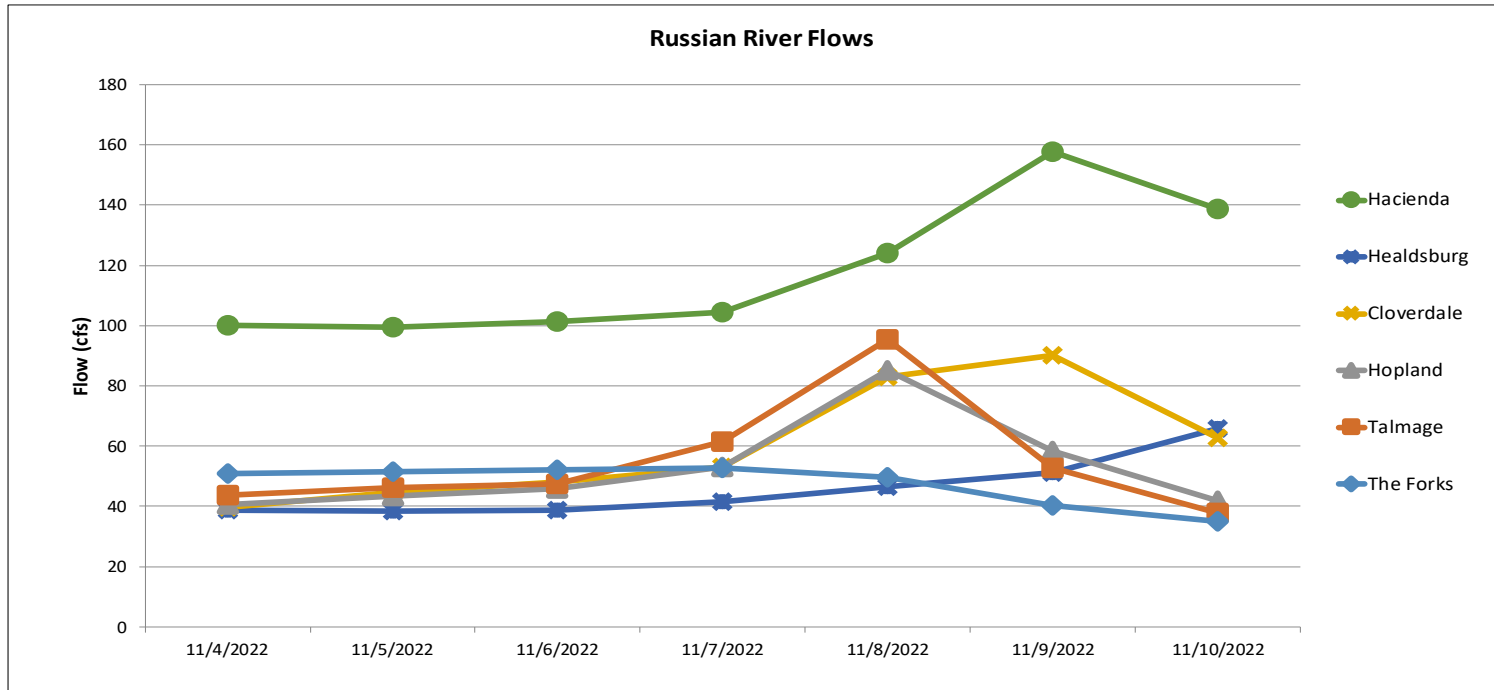
*Inflow calculation based on criteria established in D1610

Lake Pillsbury Storage 2015-2022 and Target Storage Scenarios

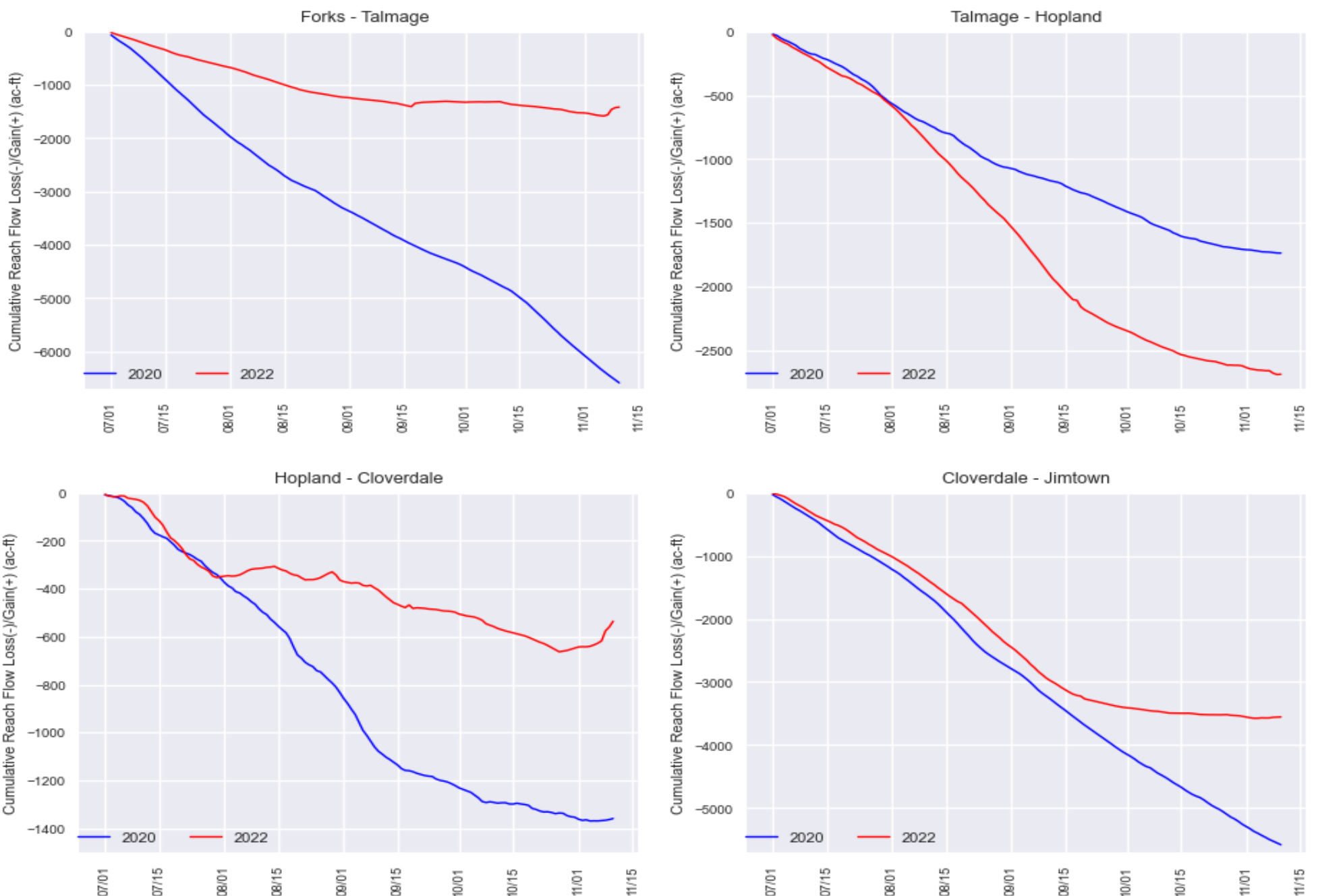


Gage	24-hr Average Flow (cfs)						
	Nov 4, 2022	Nov 5, 2022	Nov 6, 2022	Nov 7, 2022	Nov 8, 2022	Nov 9, 2022	Nov 10, 2022
The Forks*	51	52	52	53	50	40	35
Talmage USGS 11462080	44	46	47	61	95	53	38
Hopland USGS 11462500	40	43	46	53	85	59	42
Cloverdale USGS 11463000	40	45	48	53	83	90	63
Healdsburg USGS 11464000	39	38	39	42	46	51	66
Hacienda USGS 11467000	100	100	101	105	124	158	139

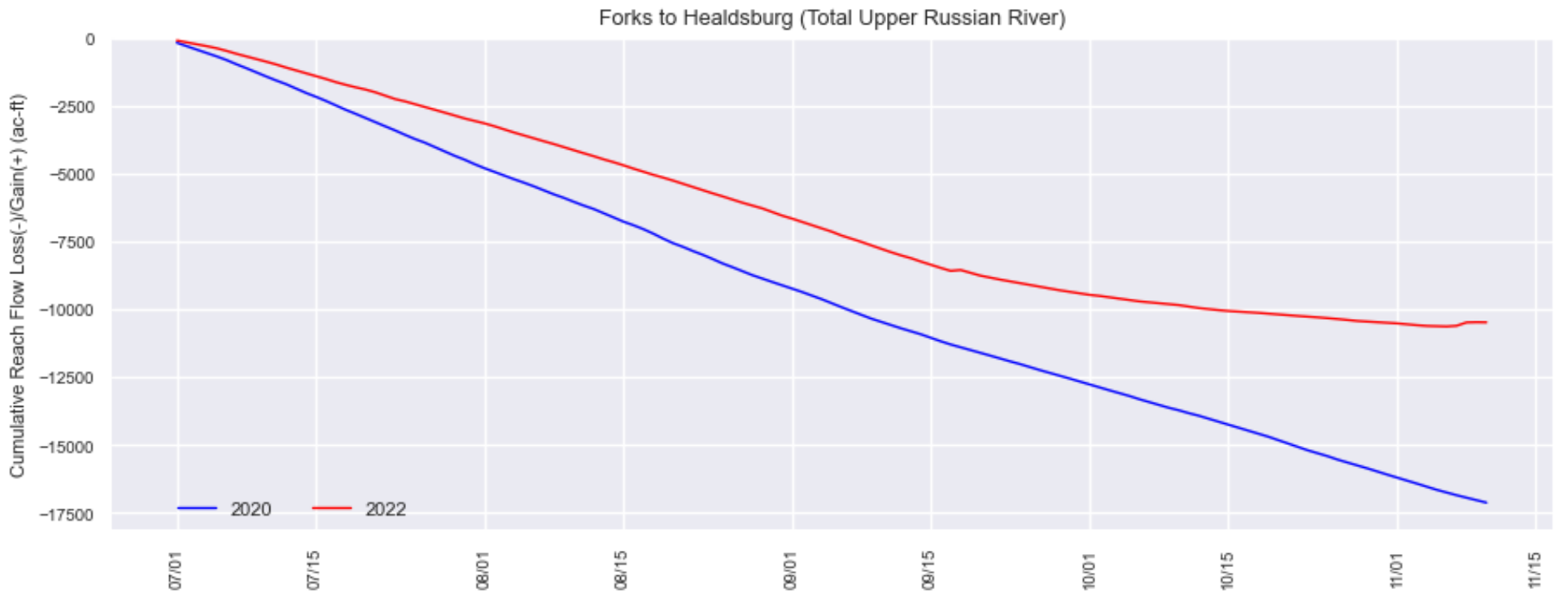
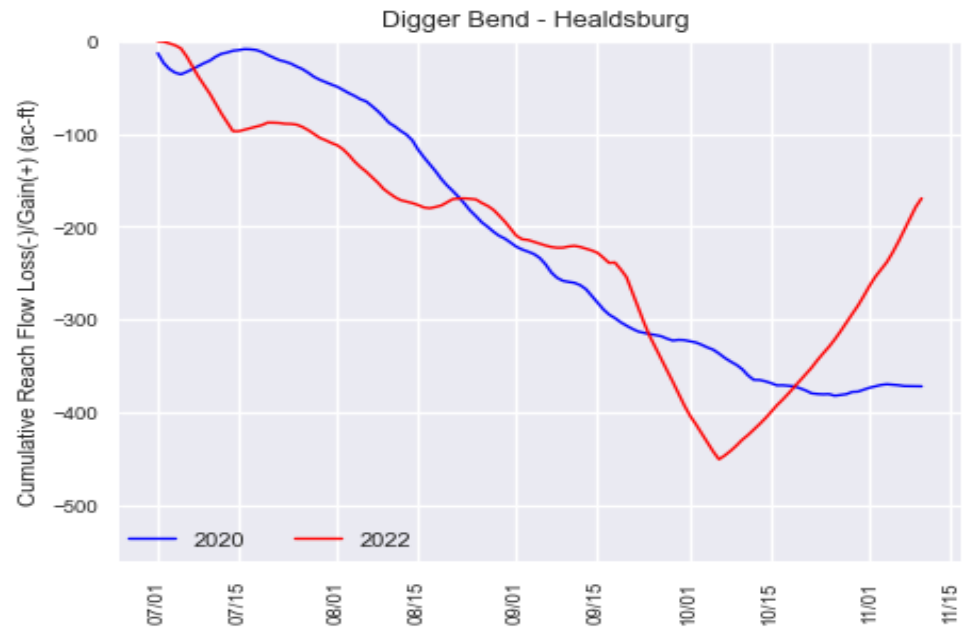
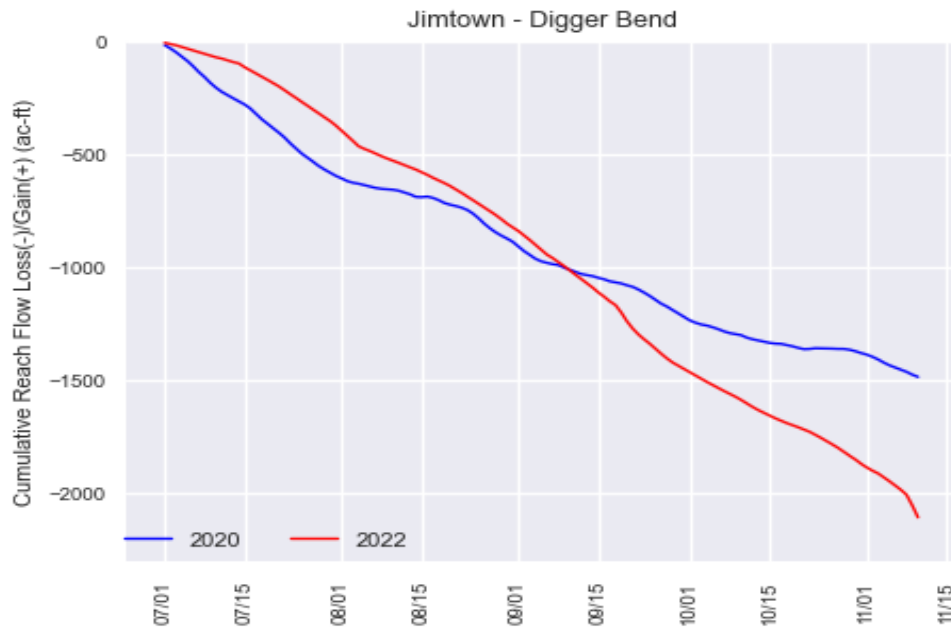
*West Fork(USGS 11461000) + East Fork (Coyote Valley Dam Release)



Upper Russian River Flow Gain/Loss (July 1, 2022 - November 10, 2022)

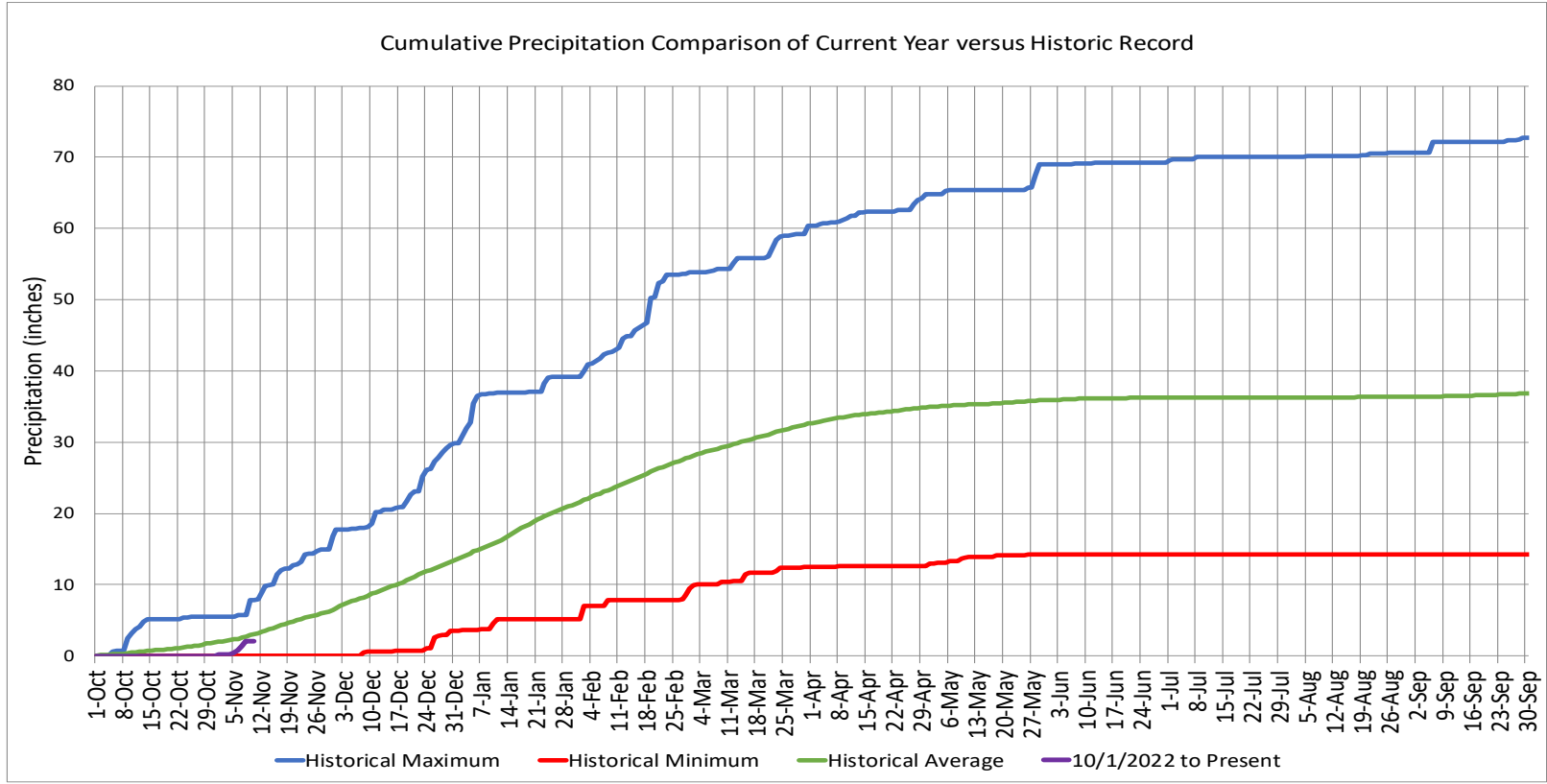


Upper Russian River Flow Gain/Loss (July 1, 2022 - November 10, 2022)



Precipitation

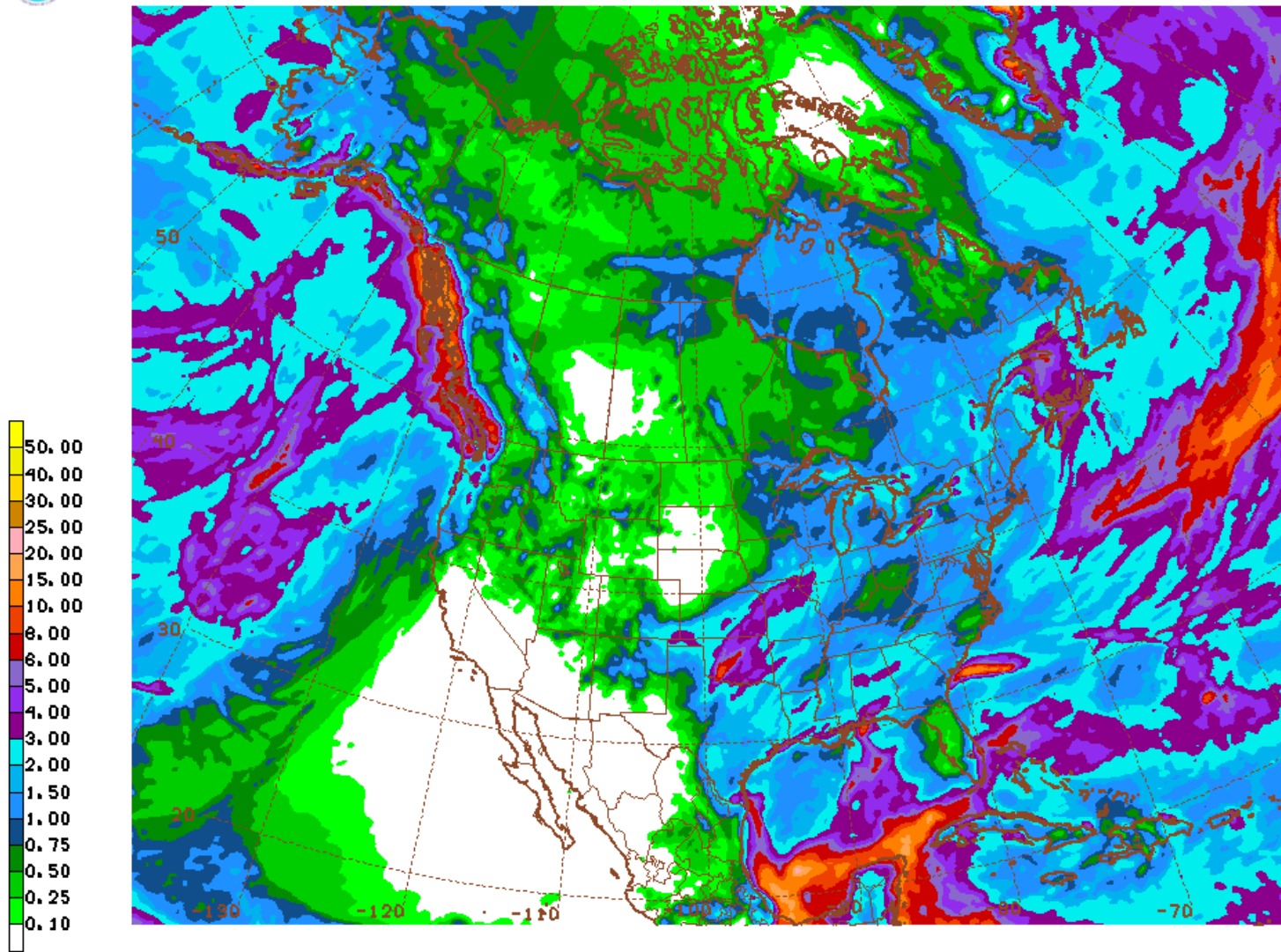
Ukiah Municipal Airport (WBAN: 72590523275 (KUKI))	
Date Range	Cumulative (inches)
Oct 1, 2022 - Nov 10, 2022	2.12
Last 7 Days*	1.90



Global Forecast System Model 16-day Cumulative Precipitation Forecast



GFS 11/14/22 12UTC 384HR FCST VALID WED 11/30/22 12UTC NOAA/NWS/NCEP



GFS WED 221130/1200V384 384HR ACCUMULATED PRECIP (IN)

Date Range
Nov 14 - Nov 30, 2022

Forecasted Cumulative (inches)
0.15

Russian River Fisheries Monitoring

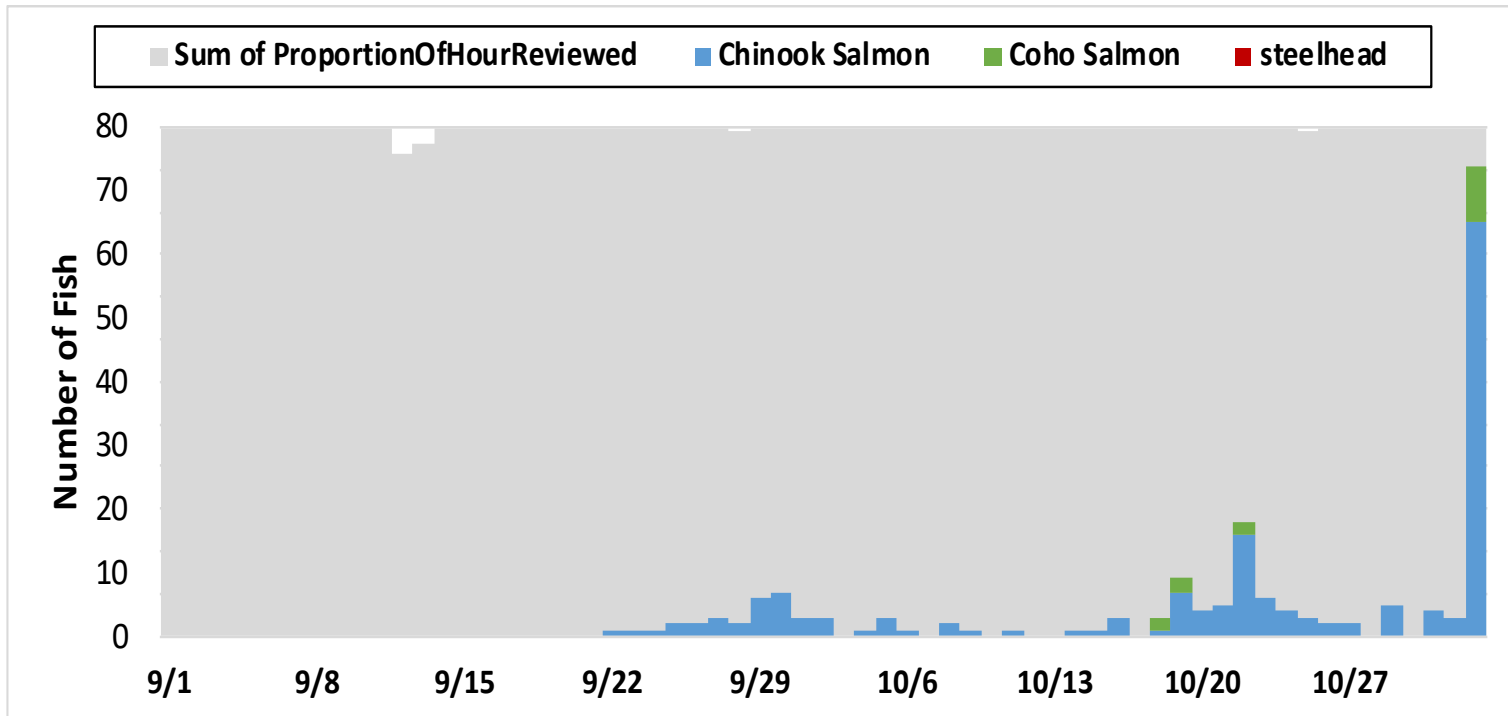


Figure 1. Number of adult salmonids and proportion of each day reviewed for video monitoring data collected at the Mirabel dam, 2022.

Week	Chinook Salmon		Coho Salmon		Steelhead	
	2022	2000-2019 Avg	2022	2000-2019 Avg	2022	2000-2019 Avg
09/01	0	0.05%	0	0.00%	0	0.65%
09/08	0	0.14%	0	0.00%	0	0.65%
09/15	0	0.24%	0	0.10%	0	0.71%
09/22	10	0.59%	0	0.00%	0	0.93%
09/29	22	6.10%	0	0.30%	0	1.30%
10/06	8	3.57%	0	0.61%	0	1.30%
10/13	10	13.30%	0	1.73%	0	2.35%
10/20	43	13.66%	6	3.05%	0	1.42%
10/27	79	17.31%	9	1.12%	0	1.27%
11/03		20.08%		4.47%		2.16%
11/10		9.73%		8.12%		4.88%
11/17		7.69%		23.45%		8.90%
11/24		3.37%		24.77%		14.83%
12/01		2.69%		7.51%		15.17%
12/08		0.74%		9.44%		15.76%
12/15		0.42%		8.83%		15.01%
12/22		0.22%		3.45%		9.24%
12/29		0.09%		3.05%		3.49%

Table 1. Weekly totals of adult salmonids observed on the Mirabel dam video camera.